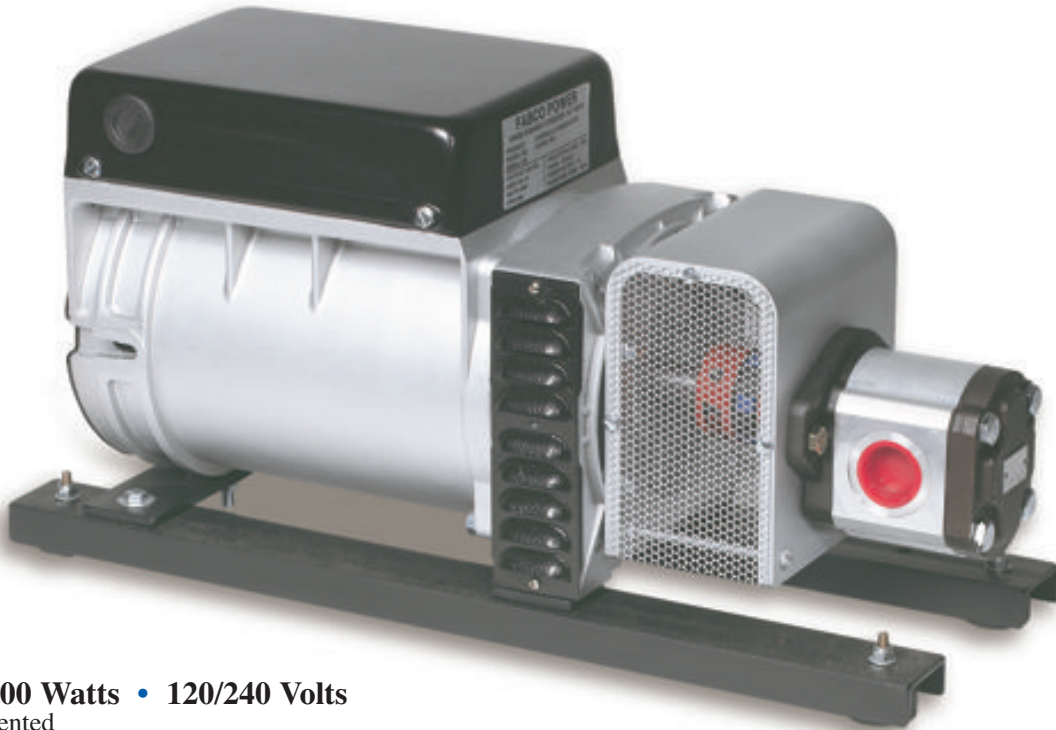


# Fabco Power

Setting the Standard in Mobile Power

## HYDRO - 500E<sup>®</sup>/ 500CD-16<sup>®</sup> HYDRAULIC DRIVEN A.C. GENERATOR



5000 Watts • 120/240 Volts  
Patented

Electrical AC Tools, Electric Motors, Night-Time Paving, Fusion of Plastic Pipe, ETC...

### Industries Served

- Telephone & Utilities
- Fire & Rescue
- Construction & Public Works
- Airline Maintenance
- Mining and More!!!

### Outstanding Features

- Lightweight Only 80 lbs.
- Compact Size Requires One Third the Space of an Engine Generator Set
- Generator is Environmentally Clean and Non-Polluting
- Complete Unit is Maintenance Free
- Generator is Completely Brushless (no AC or DC brushes)
- Automatic Current Overload Protection Device
- Easily Re-connectable for 120/240 volts
- Regulation +/-3% (automatic, no voltage regulator) Excellent Surge Capacity
- Optional Pressure Compensating Flow Control
- Exclusive "Fury Precision Power Coupler Housing" (patented)

Fabco is a global supplier of mobile power. Our generators have been used by the U.S. Military in both war and peace time for the past 50 years. It is our experience in building generators to military specifications that sets Fabco apart from all others. Our commercial units are built to those same standards.

## Specifications

The Hydro 500E® / 500CD-16® is made from high-grade aluminum to ensure longevity under the most stressful conditions. This unit was designed to withstand the rigors of heavy use and inclement weather.

<b>MODEL</b>	—	HYDRO-500E® / 500CD-16®
<b>VOLTS</b>	—	120 or 120/240
<b>AMPS</b>	—	42/21
<b>WATTS</b>	—	5000 CONTINUOUS (5500 PEAK)
<b>RPM</b>	—	3600
<b>HZ</b>	—	60
<b>INSULATION CLASS</b>	—	F&H
<b>PHASE</b>	—	SINGLE
<b>POWER FACTOR</b>	—	1.0
<b>RATED AMP TEMP.</b>	—	40°C
<b>GPM 500E® / 500CD-16®</b>	—	11 / 16
<b>PSI 500E® / 500CD-16®</b>	—	2200 / 1600
<b>WEIGHT</b>	—	80 LBS.
<b>MOTOR</b>	—	GEAR TYPE, PRESSURE BALANCED, 98% EFF.
<b>DIMENSIONS</b>	—	23 <sup>1</sup> / <sub>2</sub> "L x 8 <sup>1</sup> / <sub>2</sub> "W x 11 <sup>3</sup> / <sub>4</sub> "H

**Will Operate on any 2000 to 2500 PSI Open Circuit or Closed Loop System**

**Note:** All ratings taken at 100°F oil temperature (Do not exceed 170°F)

The exclusive "Fury Precision Power Coupler Housing" (patented). This ensures perfect alignment and provides chatter & vibration free operation thus guaranteeing extremely long coupling life.

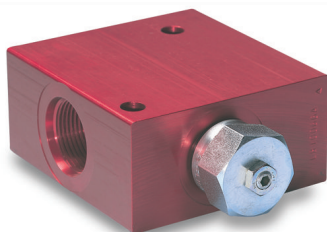
patented #5908183



## Optional Equipment



- **Control Panel**  
 Volt Meter  
 120V. Duplex Receptacle  
 Water Proof Cover  
 Automatic Overload Protection Device



- **Pressure Compensating Flow Control**  
 To maintain a constant generator RPM and voltage output

**SOLD – INSTALLED – SERVICED BY:**

**Warranty:** One year parts and labor

© Fabco Power 2008

# Fabco Power



*Setting the Standard in Mobile Power*

*Instruction Manual for Model*  
**HYDRO 500-CD-16**  
*Hydraulic Generator*

*Manufacturing of: Vehicle Mounted Generators • Hydraulic Generators*

*P.O. Box 582 • Chester, NY 10918 • 845-469-9151 • Fax: 845-469-7871 • Web Site/E-mail: [www.fabcopower.com](http://www.fabcopower.com)*

# GENERAL INFORMATION

## MODEL: HYDRO 500-CD-16

GENERATOR.....	BRUSHLESS
GENERATOR.....	3600 (60 Hz)
GENERATOR VOLTAGE.....	120 or 120/240
MOTOR STARTING.....	300% SURGE
VOLTAGE REGULATOR.....	INHERENT
OUTPUT.....	5000 WATTS CONTINUOUS 6000 WATTS PEAK AT 100° F OIL TEMPERATURE
HYDRAULIC MOTOR.....	GEAR TYPE W/CASE DRAIN PRESSURED TYPE
FLOW CONTROL (OPTIONAL).....	CARTRIDGE TYPE
MAXIMUM SPEED.....	4200 RPM (3600 RPM IDEAL)
MOTOR SHAFT.....	.750
CONTINUOUS PRESSURE RATING.....	3000 PSI
PORT SIZE	
INLET.....	1 1/16 -12 S.A.E.
RETURN.....	1 5/16 - 16 S.A.E.
CASE DRAIN.....	7/16 - 4 S.A.E.

# RECOMMENDATIONS MODEL: HYDRO 500-CD-16

HIGH PRESSURE LINE ..... 12 S.A.E

LOW PRESSURE LINE..... 16 S.A.E.

FLOW RATE ..... 16 GPM

FOR BEST RESULTS KEEP HYDRAULIC OIL  
TEMPERATURE BETWEEN 80°F AND 120°F.  
DO NOT EXCEED 175°F.

**A OIL COOLER IS RECOMMENDED.**

MAXIMUM BACK PRESSURE ..... 150 PSI

OPEN CENTER 2500 PSI SYSTEMS.

RECOMMEND FILTER ..... 10m

RECOMMEND HYDRAULIC OIL ..... DEXTRON III A.T.F.

RECOMMEND RESERVOIR SIZE ..... MINIMUM 45 GAL.  
WITHOUT A COOLER  
(Only 5 gallons if you use a cooler)

## INSTALLATION TIPS

Excessive pressure in your return line will damage the hydraulic motor seal. High back pressure can be caused by “spikes” sent back through the return from other equipment on a common return line. Another potential problem can develop if several pieces of equipment are connected to one “common” return line causing a high back pressure (150 PSI is the maximum). We recommend you run the case drain line from the generator back to the cooling tank with a separate line.

If our hydraulic generator is to be used on a truck or system that will be changing speeds, such as, in a fire truck (pumping water) we suggest you use a load sensing piston type pump rather than a fixed displacement gear type. The system will run much cooler and more efficient.

## **Initial Installation and Start-Up**

**Be sure you set the hydraulic flow (GPM) to the generator at Approximately 62.5 HZ or 3750 RPM with NO electrical load on the generator.**

**By using this setting you will have approximately 60HZ (cycles) or 3600 RPM when you are running at full rated load.**

**One way this can be accomplished is by using a Photo Tachometer on our generator coupling or generator cooling fan.**

*A Photo Tachometer is an inexpensive tool that can be purchased at McMasters, Grainger, Sears or any other electrical supplier.*

# TECHNICAL INFORMATION

These self-excited and self-regulating generators, although overall dimensions have been reduced to a minimum, are designed for high-level electrical performance and the maximum in operating reliability.

**PRELIMINARY CHECKS:**

Before touching the machines, perform a thorough and in depth visual inspection, checking that components are correctly connected up and that no cables or terminals are broken or loose.

**STARTING UP:**

Make sure, when starting up, that cooling air intake and discharge openings are free and unblocked. We also recommend (when the machine operates in a dusty environment) do periodic checks to make sure it is properly ventilated

**THE IMPORTANCE OF SPEED:**

Frequency and voltage depend directly on rotation speed. This must be kept as constantly as possible on its nominal value no matter what the load. Drive motor speed control systems generally have a small drop in speed between no load and loaded conditions. We therefore recommend setting no load speed 3÷4% above nominal speed.

**CHECKING VOLTAGE:**

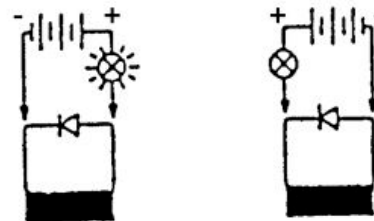
All the machines are regulated during factory testing. If voltage readings differ from the value indicated on the name plate, this maybe caused by a mistaken reading or by a different rotation speed and we recommend regulating motor speed in order to have nominal RPM under loaded conditions.

**CHECKING THE DIODES:**

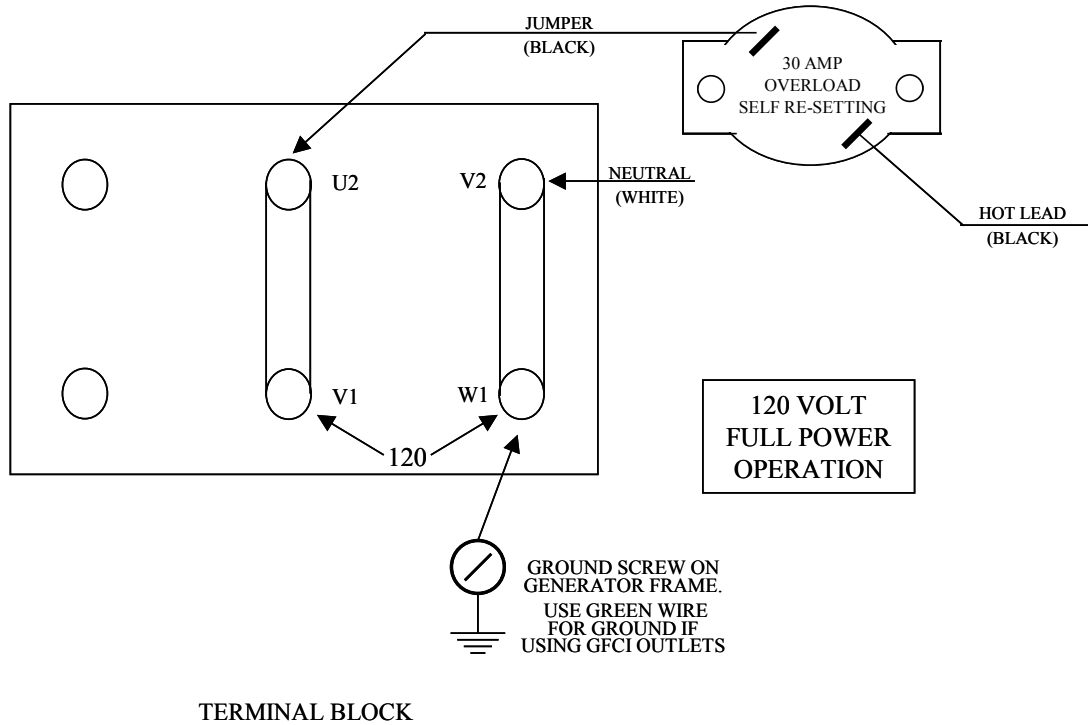
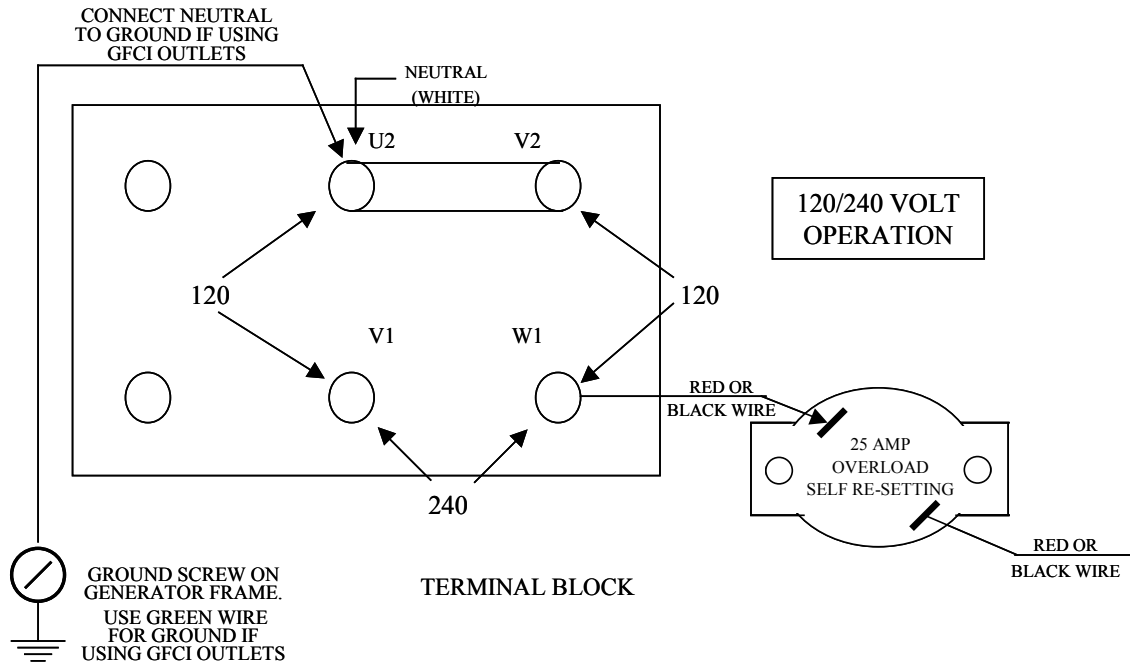
For the ohmmeter test it is best to disconnect the diode from its circuit. Measure continuity in one direction only. The test can also be made without disconnecting the diode form the circuit, using a 12V battery and a 45 watt light bulb (automobile light) as shown in the illustration. The light should turn totally on only in one direction, as shown below.

**WINDING RESISTANCE AT 20° C  
ROOM TEMPERATURE**

<u>Size</u>	<u>Stator Ω</u>	<u>Rotor Ω</u>	<u>Exciter Ω</u>
3.5	0.7	9.22	4.0
4.0	0.7	9.28	4.0
5.0	0.54	2.97	2.24
6.0	0.54	2.97	2.24
8.0	0.49	2.85	4.41
12.0	0.250	5.65	0.60



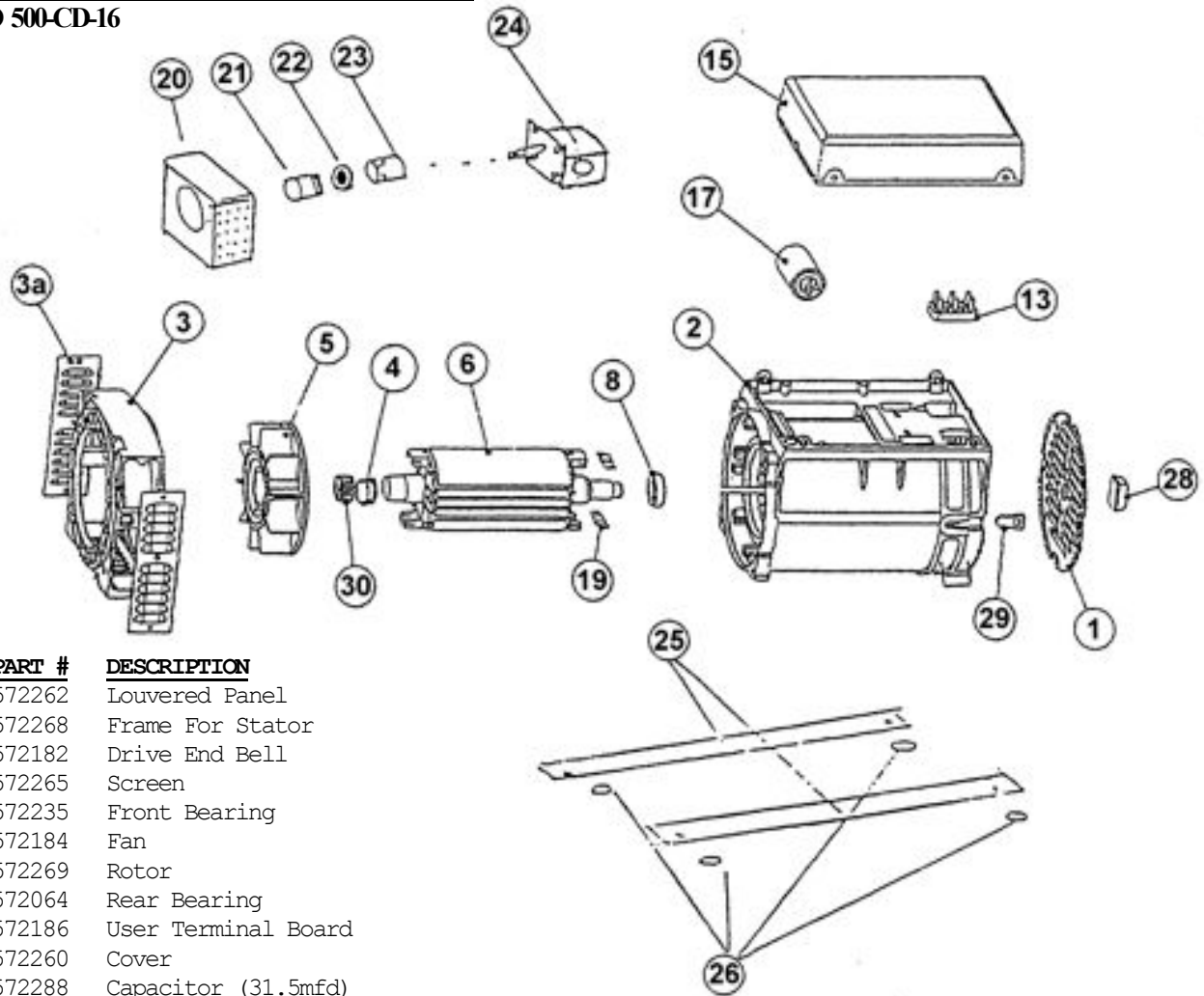
# ELECTRICAL CONNECTIONS





# ***PARTS BREAKDOWN***

HYDRO 500-CD-16



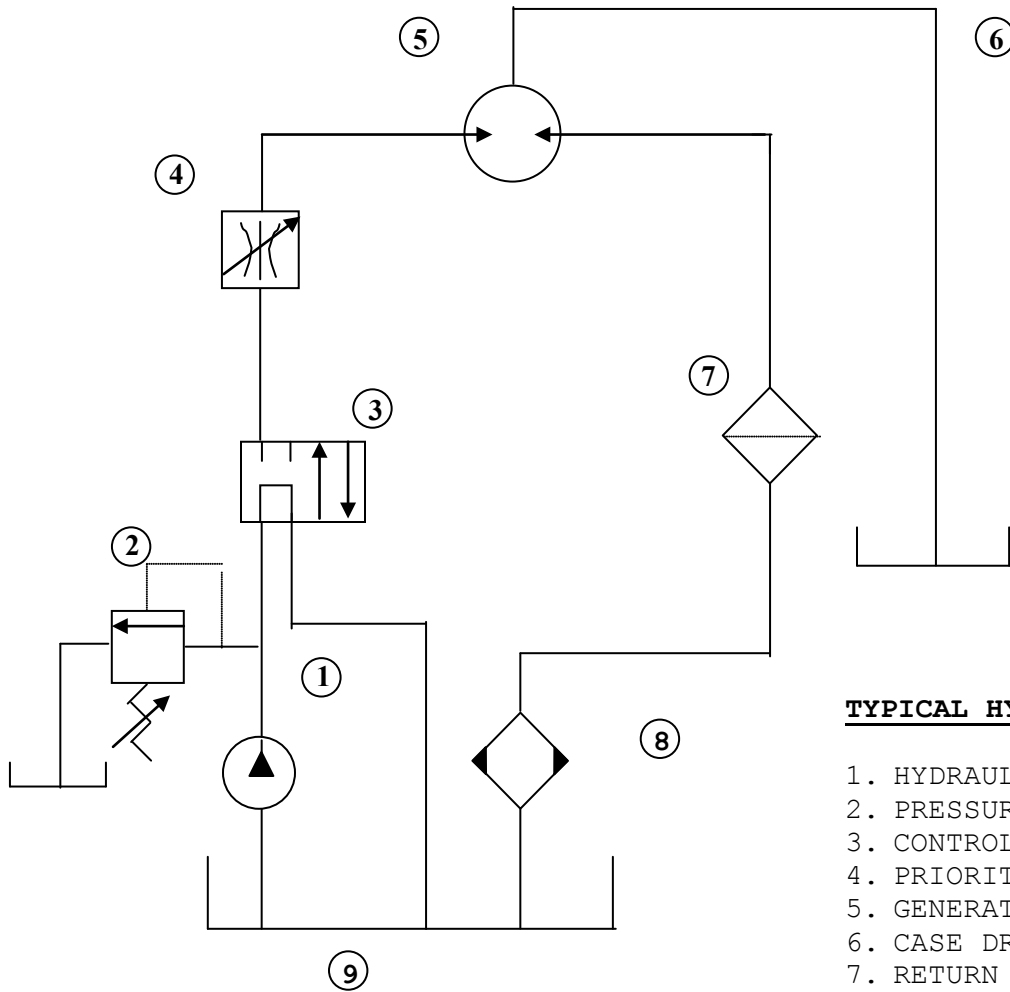
<u>No.</u>	<u>PART #</u>	<u>DESCRIPTION</u>
1	572262	Louvered Panel
2	572268	Frame For Stator
3	572182	Drive End Bell
3a	572265	Screen
4	572235	Front Bearing
5	572184	Fan
6	572269	Rotor
8	572064	Rear Bearing
13	572186	User Terminal Board
15	572260	Cover
17	572288	Capacitor (31.5mfd)
19	572196	Diodes
20	572065	Channel
21	572066	Coupling 24mm
22	572067	Spider
23	572192	Coupling 5/8
24	572362	Motor 16cc w/case drain
25	572128	Rails
26	572154	Mounts
28	572261	Stud Cover
29	572263	Rubber Cup
30	572272	Fan Ring
	572233	Flow Control Assy. 15 GPM (opt.)
	572240	Flow Control Cartridge only (opt.)
	572254	Seal For Hydraulic Motor
	572274	Generator Complete
	572159	Voltage Indicating Light
	572157	Overload Protection Device

<u>PART #</u>	<u>OPTIONAL CONTROL PANEL</u>
572227	Complete Control Panel
572228	Control Box (Shell)
572052	Volt Meter
572054	Receptacle 120 Volt
572100	Waterproof Recept. Cover
572226	GFI Outlet 120 Volt

## **TROUBLE SHOOTING**

PROBLEMS	CAUSES	REMEDIES
<b>ALTERNATOR EXCITATION FAILURE</b>	<ol style="list-style-type: none"> <li>1. Low Speed</li> <li>2. Faulty capacitor</li> <li>3. Faulty winding</li> </ol>	<ol style="list-style-type: none"> <li>1. Check RPM and set at nominal value.</li> <li>2. Check and replace.</li> <li>3. Check that winding resistance is as shown in the tables.</li> </ol>
<b>HIGH NO-LOAD VOLTAGE</b>	<ol style="list-style-type: none"> <li>1. Speed too high.</li> <li>2. Capacitor with high capacity.</li> </ol>	<ol style="list-style-type: none"> <li>1. Check and adjust RPM's</li> <li>2. Check and replace</li> </ol>
<b>LOW NO-LOAD VOLTAGE</b>	<ol style="list-style-type: none"> <li>1. Speed too low.</li> <li>2. Faulty rotary diodes.</li> <li>3. Breakdown in windings.</li> <li>4. Capacitor with high capacity.</li> </ol>	<ol style="list-style-type: none"> <li>1. Check and adjust RPM's</li> <li>2. Check and replace.</li> <li>3. Check winding resistance, as per tables.</li> <li>4. Check and replace.</li> </ol>
<b>PROPER NO-LOAD BUT LOW LOADED VOLTAGE</b>	<ol style="list-style-type: none"> <li>1. Low loaded speed.</li> <li>2. Load too large.</li> <li>3. Rotary diodes short-circuited</li> </ol>	<ol style="list-style-type: none"> <li>1. Check and regulate RPM.</li> <li>2. Check and change.</li> <li>3. Check and replace.</li> </ol>
<b>UNSTABLE VOLTAGE</b>	<ol style="list-style-type: none"> <li>1. Loose contacts.</li> <li>2. Uneven rotation.</li> </ol>	<ol style="list-style-type: none"> <li>1. Check connections.</li> <li>2. Check for uniform rotation speed.</li> </ol>
<b>NOISY GENERATOR</b>	<ol style="list-style-type: none"> <li>1. Broken bearings.</li> <li>2. Poor couplings.</li> </ol>	<ol style="list-style-type: none"> <li>1. Replace.</li> <li>2. Check and repair.</li> </ol>

# FIXED DISPLACEMENT TYPE GEAR PUMP



**TYPICAL HYDRAULIC SCHEMATIC**

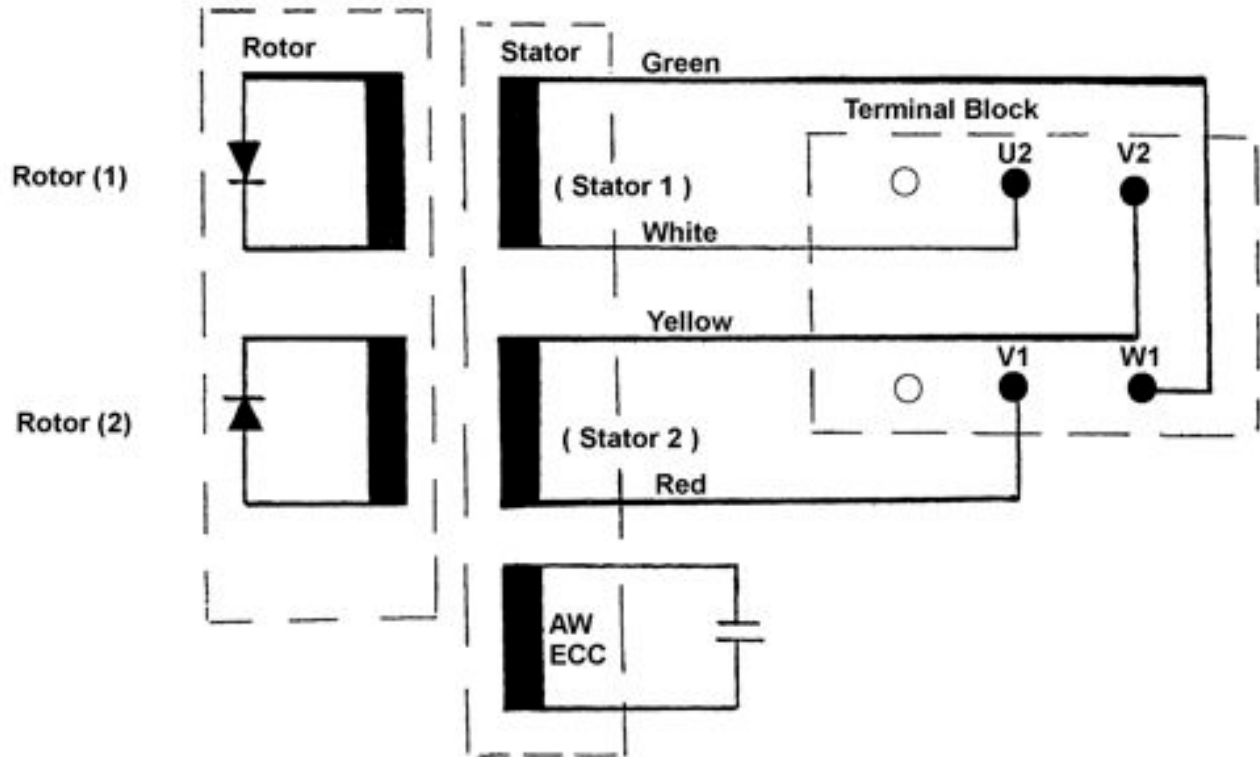
1. HYDRAULIC PUMP
2. PRESSURE RELIEF VALVE
3. CONTROL VALVE
4. PRIORITY FLOW CONTROL\*
5. GENERATOR HYRAULIC MOTOR
6. CASE DRAIN LINE\*\*
7. RETURN LINE FILTER
8. OIL COOLER
9. HYDRAULIC FLUID RESERVOIR

\* Some units may be equipped with integral priority flow control, refer to specific model number.

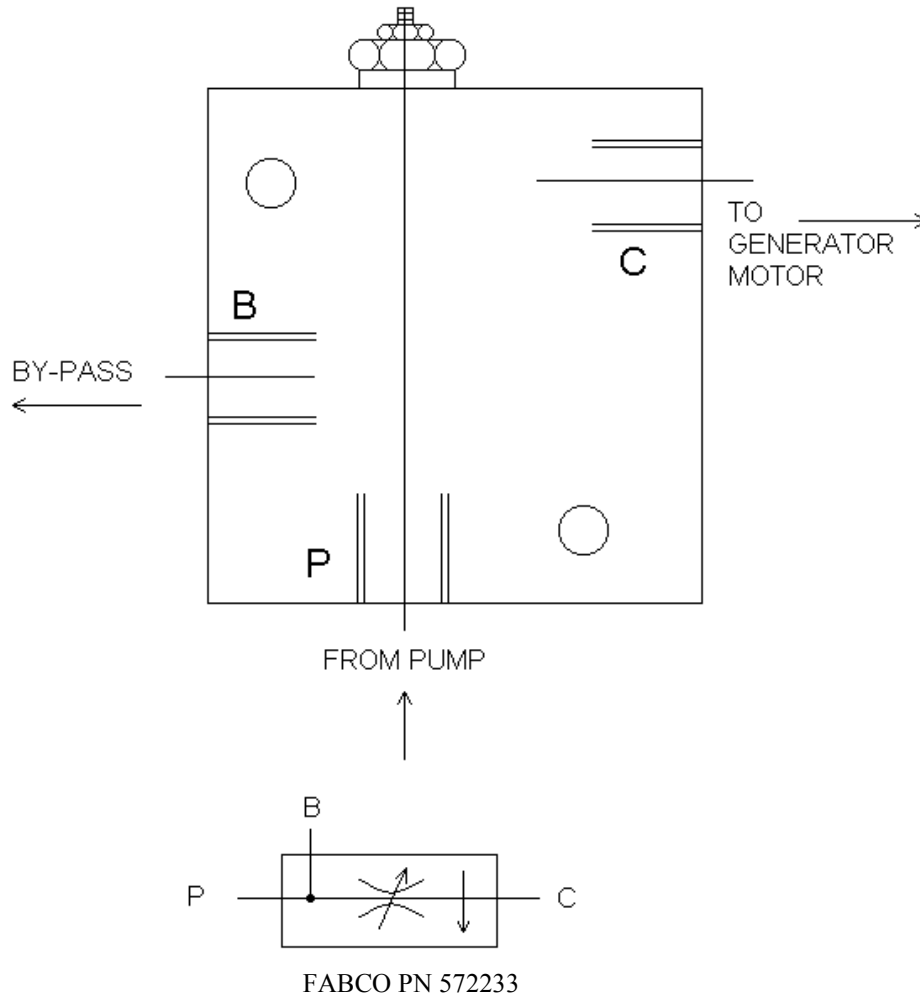
\*\* External case drain line may be required on some units refer to specific model number.  
When external case drain is required it should be unobstructed direct return to reservoir with a minimum I.D. no less than that of case drain port on generator motor.

**FOR SPECIFIC INSTALLATION RECOMMENDATIONS CONSULT FACTORY**

# BRUSHLESS GENERATOR WIRING



# FABCO BY-PASS FLOW CONTROL



**NOTE: THIS ASSEMBLY ONLY NEEDED WITH FIXED DISPLACEMENT TYPE GEAR PUMP.**

